



2018

INTERNATIONAL
CATALOGUE

o_two controlled[™]
ventilation

OUR MISSION

O-Two Medical Technologies is dedicated to the provision of state-of-the-art products for Emergency Respiratory Care.

We will continue to offer technologically advanced products that provide the best in patient outcomes. Our commitment to on-going product development brings that technology to new heights, limited only by the imagination.

We strive to exceed customer expectations by implementing continuous improvements in both the features and design of the products we provide and the services necessary to support those products.

We recognize the importance of our customers, employees, suppliers and others that we serve in the achievement of their goals and of our corporate aims. We will deal fairly and honestly with all of those who do business with us now, and in the future.

Our commitment is focused and unequivocal. Our standard is excellence. We will continue to invest resources in new endeavors and implement effective strategies, technological innovations and practices that will help us maintain our leadership in Emergency Respiratory Care.

*Please note that, due to national variances, not all products in this catalogue may be available in your country

CONTENTS

Electronic Transport Ventilators

eSeries® Transport Ventilators	4
e700	5
e600	6
e500	7

Emergency CPAP

O-Two Single-Use CPAP	8
-----------------------	---

Manual Resuscitators

SMART BAG® MO	10
Ventilation Timing Lights	12
Mini Ventilation Training Analyzer	13

Pneumatic Transport Ventilators

Automatic Resuscitators	14
CAREvent® ALS	15
CAREvent® CA	16
Transport Ventilators	17
CAREvent® ATV+	18
CAREvent® MRI	19

Analgesic Gas Delivery Systems

Equinox® Systems	20
Equinox® II	21
Equinox® Relieve	22
Equinox® Advantage	23

Demand Valves

Oxygen Demand Valve	25
Demand Valve Resuscitator	25

Flow and Pressure Regulators

Regulators	27
Flow Controllers	28
Multi Patient Unit	28
StatVac® II	28

Patient Circuits

eSeries® Circuits	29
CAREvent® Circuits	29
Analgesic Gas Circuits	29

Carrying and Mounting Systems

Carrying Cases	30
Mounting Brackets	30

Anesthesia/Resuscitation Masks

Reusable Thermoplastic	31
Reusable Silicone	31
Disposable Inflated Cuff	31

Pulse Oximetry

Finger Tip Pulse Oximeter	32
---------------------------	----

ELECTRONIC TRANSPORT VENTILATORS

eSeries

The e500, e600 and e700 Electronic Ventilator Range ushers in a new era in controlled ventilation for resuscitation and patient transport! These electronically controlled, pneumatically powered ventilators provide a range of ventilation solutions for all types of patient requirements and all levels of pre-hospital and in-hospital healthcare professionals.

The units are self-contained and only require attachment to a regulated oxygen supply and a transport ventilation circuit for immediate use. The easily replaceable, long lasting (18+ hour) battery can be charged while inside the ventilators or can be removed for charging and quickly replaced by a fresh battery pack. The display lighting has both day and night modes for easy visualization of the “real time” patient monitoring parameters and ventilation settings in any ambient light conditions.

The simple controls on all three models provide an ease of use concept that is second to none. There are no multiple screens to scroll through to establish patient ventilation parameters. The units have an initial, preset, quick start up mode requiring only the selection of the patient size to begin automatic ventilations.

The simplicity of operation masks the level of sophistication these products offer. The inclusion of ventilation modes for “mask or protected advanced

airway CPR” with visual and audible prompts, adds another dimension to the application for these Ventilators not found on any other brands in the market.

Continuous parameter monitoring and self-adjustment in all three models ensures that the device is always fully functional and ready for immediate use. The wide range of both visual and audible alarms provides the Healthcare Professional with warnings of any changes in the patient or device.



e700

The e700 combines all of the main features of the e600 with additional modalities of BiLVL Ventilation, Pressure Support and Pressure Control to truly emulate the ventilation options offered by standard intensive care ventilators. This provides the ventilation modes necessary to maintain continuity of care during critical care patient transport. With the addition the functions offered by the e700 these offer the Healthcare Provider the additional flexibility in their set up adjustment.

The ventilation solutions offered by the e700 cannot be compared to any other products of its type in the market. The e700 is self-contained and only requires attachment to a regulated oxygen supply and a transport ventilation circuit for immediate use. The easily replaceable long lasting (18+ hour) battery can be charged while inside the ventilator or can be removed for charging and quickly replaced with a fresh battery pack.

The display lighting has both day and night modes for easy visualization of the live patient parameters and ventilator settings in any ambient light conditions. Designed for a range of patient sizes (from infant to large adult) the e700 comes in a very compact and lightweight design with built-in carrying handle.

The simple to operate controls of the e700 provide an ease of use concept that is second to none that speeds up and simplifies even the most complex ventilation parameter set up. There are no multiple screens to scroll through to establish patient ventilation parameters. The e700 has an initial pre-set, quick start up mode requiring only the selection of the patient size to begin automatic ventilation within seconds

Features include SIMV w/PSV, A/C (VCV, PCV), BiLVL w/PSV, CPAP w/PSV, Mask CPR (MCPR) and Advanced Airway, Intubated CPR (ICPR), Manual, Adult/Child/Infant Quick Start Mode.



LONG LASTING BATTERY
18-24h

ECONOMICAL
Low gas consumption

Input/Output

Start up Screen

CPR Screen

01EVE700 - O-Two Medical Technologies e700 Electronic Automatic Transport Ventilator c/w Disposable Patient Circuit, Resuscitation Mask, 6 Foot Supply Hose, Calibrated Test Lung and Electrical Power Supply Each

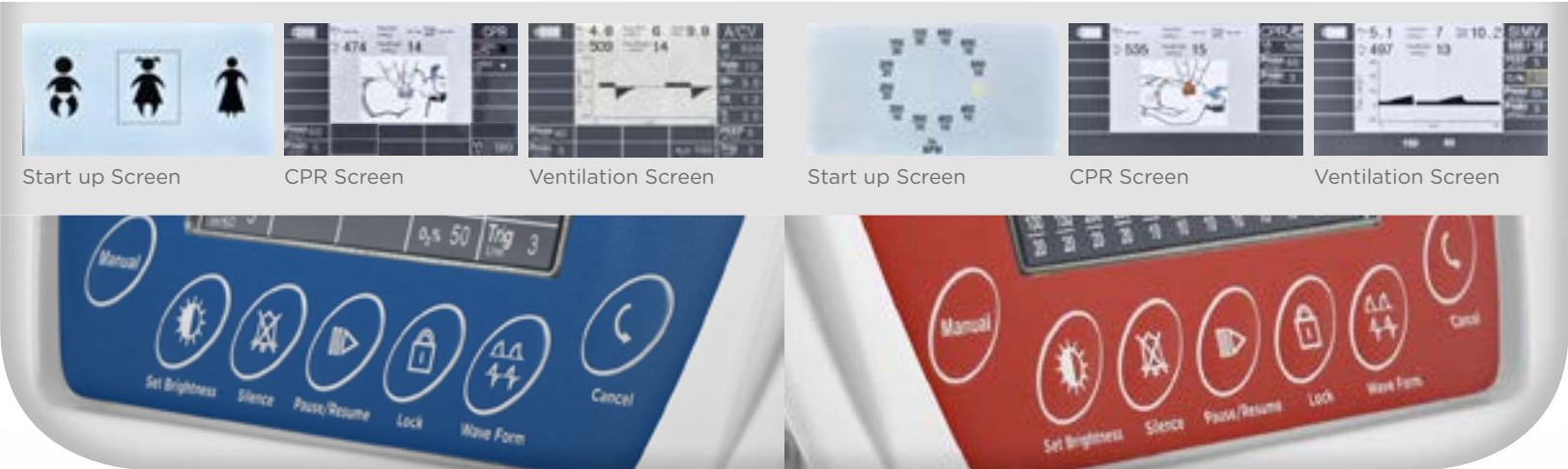
e600

When long patient transports are required, the e600 Electronic Transport Ventilator provides the range of ventilation modes that meet the needs of the patient requiring controlled or assisted ventilation. With volume modes as well as CPAP, you are assured of having the right option to meet the requirements of your chosen ventilation strategy.

Using the same ease of use concept and simplicity of controls as all our models of Electronic Transport Ventilators, the e600 provides a wide range of options to meet the patient's needs. The simple to operate controls of the e600 provide an ease of use concept that is second to none that speeds up and simplifies even the most complex ventilation parameter set up.

There are no multiple screens to scroll through to establish patient ventilation parameters. The e600 has an initial pre-set, quick start up mode requiring only the selection of the patient size to begin automatic ventilation within seconds.

Features include CMV, SIMV, IPPV, AC (VCV), CPAP, Mask CPR (MCPR) and Intubated, Airway, Intubated (ICPR), Manual, Adult/Child/Infant.



PRACTICAL
Ideal for long transports

ECONOMICAL
Low gas consumption

EASY TO USE
Simple Controls

AFFORDABLE
Exceptionally Low Price

O1EVE600 - O-Two Medical Technologies e600 Electronic Automatic Transport Ventilator c/w Disposable Patient Circuit, Resuscitation Mask, 6 Foot Supply Hose, Calibrated Test Lung and Electrical Power Supply Each

e500

The e500 Electronic Transport Ventilators are specially designed for the demands of emergency, rescue, resuscitation and patient transport. The e500 Electronic Transport Ventilator is a time-cycled, volume-constant transport ventilator that provides a safe and effective means of delivering controlled ventilation during patient transport, respiratory and/or cardiac arrest.

Simple and quick to set up, the e500 provides a range of 12 physiologically normal tidal volume/ventilation frequency setting selections for children over 15 Kg to large adults. The e500 provides controlled and assisted ventilation for a range of patient sizes from adults, to children, and infants who require a range of tidal volumes from 100 ml to 650 ml and a fixed I:E Ratio of 1:2. This device is not suitable for the ventilation of neonates.

The inclusion of ventilation modes for “mask or protected advanced airway CPR” with visual and audible prompts, adds another dimension to the e500 that is not found on any other brands in the market. The addition of the CPAP mode (which provides up to 20 cm H₂O of CPAP) improves the flexibility of use for this Ventilator, eliminating the need for stand alone CPAP Devices.

Features include SIMV, CPAP, Mask CPR (MCPR) and Advanced Airway, Intubated CPR (ICPR) Manual, Quick Start Mode. The addition of CPAP improves the flexibility of use for this Ventilator, eliminating the need for stand-alone CPAP Devices.



O1EVE500 - O-Two Medical Technologies e500 Electronic Automatic Transport Ventilator c/w Disposable Patient Circuit, Resuscitation Mask, 6 Foot Supply Hose, Calibrated Test Lung and Electrical Power Supply Each

EMERGENCY CPAP

WIDE CPAP
RANGE

LOW OXYGEN
CONSUMPTION



O-Two Single-Use CPAP Systems

The O-Two Single-Use CPAP (Continuous Positive Airway Pressure) System provides superior CPAP delivery in a simple, compact device that can fit easily into your existing airway management or resuscitation kits.

The “Simple by Design” concept and single-use components including the soft, neoprene, head harness and cuffed facemask makes application and operation of the O-Two Single-Use CPAP extremely simple for the Healthcare Provider and more comfortable and less distressing for the patient.

The design of the O-Two Single-Use Open CPAP System minimizes gas consumption conserving oxygen and increasing cylinder duration. At 8.0 cm H₂O CPAP setting, this provides a 41.5 minute operating time on a full, standard ‘D’ cylinder. Other competitors Downs Flow Generators and disposable constant flow devices may average as little as 4 minutes on the same size cylinder!

The adjustment of the CPAP Level is achieved by simply adjusting the output flow from your oxygen therapy regulators or oxygen therapy wall outlet. The setting selections noted on the device provide an accurate indication of the constant airway pressure applied at each flow setting.

The ambient air intake port and the location of the in-line oxygen tubing input are designed to eliminate the possibility of accidental occlusion of the air intake, removing the risk of barotrauma due to the patient or rescuer inadvertently blocking the port.

ORDERING INFORMATION



CONFIGURATION 1

CPAP system only

- 01CV0211-cs** - o_two CPAP System (Large Adult)
c/w face mask (size 5) and head harness (Case/10)
- 01CV0212-cs** - o_two CPAP System (Adult)
c/w face mask (size 4) and head harness (Case/10)
- 01CV0213-cs** - o_two CPAP System (Child)
c/w face mask (size 3) and head harness (Case/10)

CONFIGURATION 2

CPAP system with Manometer

- 01CV0217-cs** - o_two CPAP System (Large Adult)
c/w Adult Cuffed Facemask (size 5), Head Harness System, Flow
Vector Valve with Manometer and Oxygen Supply Tubing (Case/10)
- 01CV0218-cs** - o_two CPAP System (Adult)
c/w Adult Cuffed Facemask (size 4), Head Harness System, Flow
Vector Valve with Manometer and Oxygen Supply Tubing (Case/10)
- 01CV0219-cs** - o_two CPAP System (Child)
c/w Child Cuffed Facemask (size 3), Head Harness System, Flow
Vector Valve with Manometer and Oxygen Supply Tubing (Case/10)

CONFIGURATION 3

CPAP system with Manometer and nebulizer

- 01CV0224-cs** - o_two CPAP System (Large Adult) with Nebulizer
c/w Adult Cuffed Facemask (size 5), Head Harness System,
pressure manometer, nebulizer with tubing and preset flow
restrictor and “T” piece (Case/10)
- 01CV0225-cs** - o_two CPAP System (Adult) with Nebulizer
c/w Adult Cuffed Facemask (size 4), Head Harness System,
pressure manometer, nebulizer with tubing and preset flow
restrictor and “T” piece (Case/10)
- 01CV0226-cs** - o_two CPAP System (Child) with Nebulizer
c/w Adult Cuffed Facemask (size 3), Head Harness System,
pressure manometer, nebulizer with tubing and preset flow
restrictor and “T” piece (Case/10)



REPLACEMENT ITEMS



- 01CV0210-CS** - O-Two Disposable Open Circuit
CPAP Valve c/w oxygen supply tubing (Case/50)
- 01CV0220-CS** - O-Two Single-Use CPAP Nebulizer
System c/w 6 l/min Flow Adapter, T-Piece, Updraft
Nebulizer with Oxygen Supply Tubing (Case/10)
- 02RT1301-CS** - O-Two Single-Use Replacement CPAP
Nebulizer T-Piece (Case/10)
- 01CV8009-CS** - O-Two Replacement Neoprene Head
Harness System (Case/5)

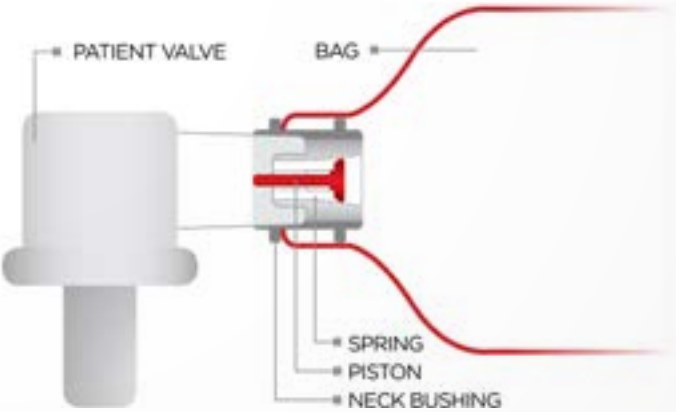
MANUAL RESUSCITATORS



SMART BAG® MO Controlled Flow Manual Resuscitator

SMART BAG® MO has been designed to provide consistent ventilations while virtually eliminating the “Inadvertent Hyperventilation” risks of gastric insufflation, reduced venous return to the heart and increased brain ischemia associated with conventional BVM ventilation.

The unique actuating mechanism inside the neck bushing of the SMART BAG® MO actually responds to the rescuer and the patient. By responding to the rescuer’s squeeze and release of the Bag-Valve-Mask Resuscitator, the SMART BAG® MO limits the excessive flow of gas into the patient’s airway, effectively lowering the airway pressure generated and significantly reducing the risk of gastric insufflation. In a normally compliant and resistant airway, the airway pressure is limited to below the purported lower esophageal sphincter opening pressure of 19 cmH₂O.



ORDERING INFORMATION

SMART BAG® MO SINGLE-USE BAG-VALVE-MASK RESUSCITATORS



01BM3200-MO-Cs - Disposable SMART BAG® MO (Adult) incl., Universal Facemask and Reservoir System *Case/12*

01BM3210-MO-Cs - Disposable SMART BAG® MO (Infant) incl., Universal Facemask and Reservoir System *Case/12*

01BM3201-MO-Cs - Disposable SMART BAG® MO (Adult) incl., Cuffed Facemask and Reservoir System *Case/12*

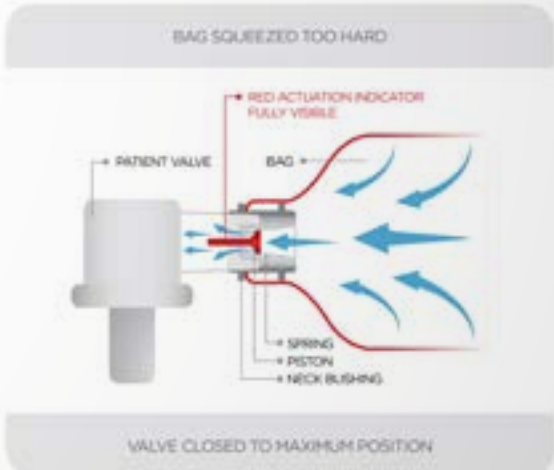
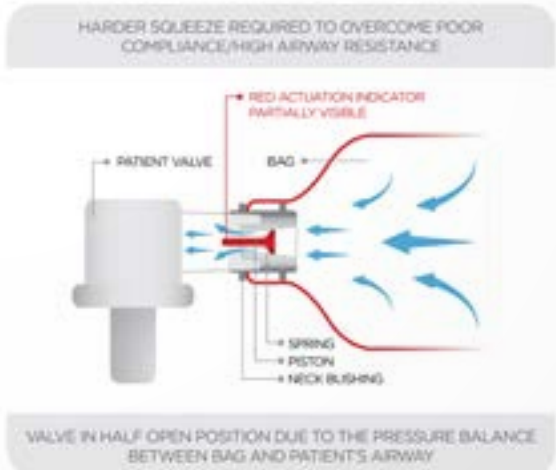
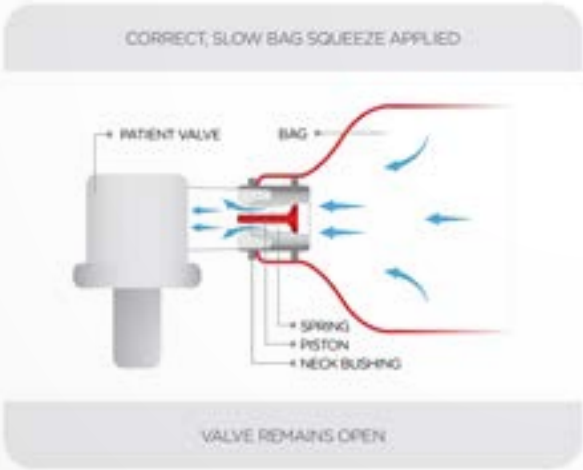
01BM3211-MO-Cs - Disposable SMART BAG® MO (Infant) incl., Cuffed Facemask and Reservoir System *Case/12*

SMART BAG® MO REUSABLE SILICONE BAG-VALVE-MASK RESUSCITATORS



01BM3100-MO - Silicone SMART BAG® MO (Adult) incl., Silicone Universal Resuscitation Mask and Oxygen Reservoir System in Cardboard Carton Each

01BM3110-MO - Silicone SMART BAG® MO (Infant) incl., Silicone Universal Resuscitation Mask and Oxygen Reservoir System in Cardboard Carton Each





VENTILATION TIMING LIGHTS

The proper timing of breaths during CPR or respiratory arrest has been shown to be poorly performed, overly aggressive and potentially detrimental to patient survival.

The single-use O-Two Adult and PEDI Ventilation Timing Lights go one step further than other devices currently available. They not only provide timing for the initiation of the breath but also indicate the duration of the ventilation. By remaining illuminated for the duration of the inspiratory time, they provide a safe, slow delivery of the breath. The off phase provides adequate expiration time to avoid breath stacking.

Simple and easy to apply and use, the O-Two Adult and PEDI Ventilation Timing Lights are truly a “Flash of Inspiration”!

ORDERING INFORMATION



01BM1000-Cs - Adult Ventilation Timing Light is individually packaged with Peel Back Adhesive Backing to attach to any Bag-Valve-Mask Resuscitator
Case/50

01BM1500-Cs - PEDI Ventilation Timing Light is individually packaged with Peel Back Adhesive Backing to attach to any Bag-Valve-Mask Resuscitator
Case/50

MINI VENTILATION TRAINING ANALYZER

The Mini Ventilation Training Analyzer has been developed to demonstrate the correct ventilation technique when using a Bag-Valve-Mask resuscitator and the complications of gastric insufflation associated with incorrect technique.

Based on a normal adult lung capacity, compliance, airway resistance and lower esophageal sphincter (LES) pressure, the Mini Ventilation Training Analyzer responds to the Rescuer’s squeeze and release of the BVM like a real patient. If the BVM is squeezed too quickly or forcefully, the high pressure generated (due to high air flow from the BVM) will cause air to enter the stomach through the calibrated LES (Lower Esophageal Sphincter - preset at 19 cmH₂O).



ORDERING INFORMATION

01TA1000 - Mini Ventilation Training Analyzer complete with Calibrated Stomach Simulator, Calibrated Lung simulator, 22/22 mm BVM Connector, in Softpack Carrying Case with Shoulder Strap
Each

01TA1200-MO - Mini Ventilation Training Analyzer complete with Calibrated Stomach Simulator, Calibrated Lung Simulator, 22/22 mm BVM Connector, SMART BAG® MO Controlled Flow Manual Resuscitator and Easy Grip® Bag-Valve-Mask Resuscitator with Softpack Carrying Case with Shoulder Strap
Each

01TA1851 - Replacement Calibrated Test Lung with Compliance Band and Airway Restrictor
Each

PNEUMATIC RESUSCITATORS & VENTILATORS

Pneumatic Transport Resuscitators

Automatic Resuscitators (according to the International Resuscitation Guidelines) provide improved lung inflation when compared to mouth-to-mouth devices, bag-valve-mask and manually triggered devices.

Automatic Resuscitators virtually eliminate gastric insufflation, improve venous return to the heart and reduce cerebral ischemia by reducing CO₂ wash out. They provide the controlled ventilation that is so important in improving your patient's survival chances.

CAREvent® Handheld Resuscitators are lightweight, portable, extremely durable and simple to use Automatic Time/Volume Cycled Transport Resuscitators. Designed for pre-hospital care, the CAREvent® Handheld Resuscitators are Micro-Pneumatically powered with specific functionality for the pre-hospital environment. "ZERO" drive gas consumption is just one of the many features that go into making these products ideal for pre-hospital emergency care providers. Specific models are designed to suit most emergency ventilation needs.

The CAREvent® series provides the rescuer benefits by freeing up their hands to provide other management protocols. The addition of the Gurney Clip to the resuscitator provides a "hands free" option not available with other devices. This is especially important during patient movement in and out of buildings and up and down stairs.



CAREvent® ALS HANDHELD AUTOMATIC RESUSCITATOR

The CAREvent® ALS Handheld Automatic Resuscitator is a pneumatically powered, time/volume cycled resuscitator with the added feature of a Manually Actuated, Automatic Ventilation Override Button (Manual Button). It is designed using micro pneumatic technology and does not require an electrical supply or batteries to operate.

The single slider control for the simultaneous adjustment of ventilation, frequency and tidal volume has six preset automatic settings plus manual override for a range of patients from 20 kg. body weight to large adults. Meeting the current guidelines for resuscitation, during mask ventilated CPR, the CAREvent® ALS Handheld Resuscitator provides the first breath automatically followed by a manually actuated second breath. This inhibits the automatic cycling for 20 seconds, allowing the rescuer to provide the required 30 chest compressions.

The patient is protected from barotrauma due to over inflation by the audible, pressure relief system, which warns the rescuer of airway obstruction or airway restrictions. Excess delivered volume is discharged into the atmosphere.

ORDERING INFORMATION

01CV3000 - CAREvent® ALS Automatic Transport Resuscitator complete with Gurney Clip, 6 Foot (1.8 M) Supply Hose and Universal Resuscitation Mask
Each

01CV3100 - CAREvent® ALS Automatic Transport Resuscitator Kit with Gurney Clip, Adjustable 0-25 L/min Regulator with 2 DISS Self-Sealing Outlets with 6 Foot (1.8 M) Supply Hose & Universal Resuscitation Mask in Moulded Case (Cylinder Not Included)
Each

01CV3112 - CAREvent® ALS Automatic Transport Resuscitator Kit with Gurney Clip, Adjustable 0-25 L/min regulator with 2 DISS Self-Sealing Outlets, Statvac® II Aspirator in Moulded Case with 6 Foot (1.8 M) Supply Hose, Yankauer Suction Tip with Tubing and Universal Resuscitation Mask (Cylinder Not Included)
Each

01CV3200 - CAREvent® ALS Automatic Transport Resuscitator Kit with Gurney Clip, Adjustable 0-25 L/min Regulator with 2 DISS Self-Sealing Outlets in Airway Management Semi-Rigid Carrying Case with 6 Foot (1.8 M) Supply Hose and Universal Resuscitation Mask (Cylinder Not Included)
Each

01CV3212 - CAREvent® ALS Automatic Transport Resuscitator Kit with Gurney Clip, Adjustable, 0-25 L/min Regulator with 2 DISS Self-Sealing Outlets, 6 Foot (1.8 M) Supply Hose, Statvac® II Aspirator in Airway Management Semi-Rigid Carry Case with Yankauer Suction Tip with Tubing and Universal Resuscitation Mask (Cylinder Not Included)
Each

CAREvent® CA HANDHELD AUTOMATIC RESUSCITATOR

The chemical agent, WMD and IDLH (Immediately Dangerous to Life and Health) environments are considered to be so hazardous that the less the rescuer has to do (during rescue and transport) to ventilate the patient, the quicker the patient can be resuscitated and the greater chance for the patient’s survival.

The CAREvent® CA will provide automatic ventilation to the non-breathing patient at a rate and volume designed to provide adequate oxygenation while virtually eliminating the risks associated with gastric insufflation, improve venous return to the heart and reduce cerebral ischemia by reducing CO₂ wash- out. They provide the controlled ventilation that is so important in improving your patient’s survival chances.

Should the patient start to breathe spontaneously, the Demand Breathing feature of the CAREvent® CA allows the patient to breathe at his/her own rate and volume. The patient’s inspiratory effort (if adequate) will also cause the “automatic circuit shut off” to stop the automatic cycling of the resuscitator. If the patient stops breathing again, the automatic cycling will restart with no action required on the part of the rescuer.

The added feature of the 2 L/min “Mask Purge” Bleed Flow reduces the risk of the patient drawing toxic ambient air into the mask during spontaneous breathing should a leak in the mask to face seal occur.

Specifically designed and tested for these dangerous environments in conjunction with one of the world’s largest gas producers, the CAREvent® CA is the only resuscitator of its type currently on the market.



ORDERING INFORMATION

01CV3000-CA - CAREvent® CA (Chemical Agent) Handheld Automatic Rescue Resuscitator
complete with 6 Foot Supply Hose and Universal Resuscitation Face Mask
Each



AUTOMATIC TRANSPORT VENTILATORS

The CAREvent® ATV+ and MRI Conditional Transport Ventilators are pneumatically powered, time/volume cycled, intermittent positive pressure patient ventilators specifically designed for use by trained personnel in the pre-hospital, hospital, interhospital and air ambulance environments. They do not require batteries or any electrical supply to operate.

The independent controls for Minute Volume and Frequency offer a comprehensive range of 12 ventilation frequencies and 12 settings of Minute Volume providing 144 possible combinations of delivered tidal volume and respiratory rate. The ergonomically designed and color coded groupings facilitate the selection and setting of the breathing parameters while protecting the controls.

Unique “audible and visual pneumatic alarms” for circuit disconnect (BSI), low gas supply pressure, low airway pressure and the audible high airway pressure alarm are provided to improve the level of patient safety by alerting the operator to any problems with the patient’s breathing parameters. An override control is provided for the BSI alarm to silence the alarm for 15 seconds.

The adjustable “CPAP/PEEP” mode allows for these two functions to be supplied by the ventilator, eliminating the need for an external PEEP valve or CPAP device.

CAREvent® ATV+ AUTOMATIC TRANSPORT VENTILATOR



ORDERING INFORMATION

01CV6000 - CAREvent® ATV+ Automatic Transport Ventilator complete with Adjustable, 20 - 60 cm H₂O Pressure Relief System, Low Pressure Visual and audible Alarm, Air Mix, Adjustable CPAP/PEEP, Breathing System Integrity (BSI) Alarm, 6 Foot Supply Hose, Deluxe Disposable Ventilation Circuit, Calibrated Test Lung and Universal Resuscitation Mask
Each

CAREvent® MRI AUTOMATIC TRANSPORT VENTILATOR

The CAREvent® MRI is conditional for use in MRI environments up to 3 Tesla. The device can be placed next to the magnet with no effect on ventilator function or degradation in image quality.



ORDERING INFORMATION

01CV7000 - CAREvent® MRI Conditional Transport Ventilator complete with Adjustable 20 - 60 cm H₂O Pressure Relief System, Low Pressure Visual and Audible Alarm, Air Mix, Adjustable CPAP/PEEP, Breathing System Integrity (BSI) Alarm, 6 Foot Supply Hose, Deluxe Disposable Ventilation Circuit, Calibrated Test Lung & Universal Mask
Each

ANALGESIC GAS DELIVERY SYSTEMS

EQUINOX®

The Equinox® Range of Analgesic Gas Delivery Systems are rugged demand inhalation devices for the administration of pre-mixed N₂O/O₂ analgesic gas (Entonox® or Alnox®) and either pre-set or adjustable mixtures of oxygen and nitrous oxide from separate gas supplies.

The Equinox® Range of N₂O/O₂ Analgesic Gas Delivery Systems are specifically designed for pain management during emergency situations, painful procedures or child birth. They deliver high demand flow rates with low triggering pressures, reducing the amount of effort required by the patient, to maintain the required level of analgesia.

From the light weight, Equinox® II Demand Valve with its incorporated 360° Patient Valve Swivel Housing and easy disassembly for cleaning, to the sophisticated Equinox® Advantage Adjustable Analgesic Gas Delivery System, these products offer a range of features to meet the needs of a wide range of patient groups.



Equinox® II Demand Valve Analgesic Gas Delivery System

The Equinox® II Analgesic Gas Delivery System is designed for the administration of mixed N₂O/O₂ analgesic gas mixture (Entonox® or Alnox®) for emergency pain management and obstetric analgesia. The system consists of a single stage pressure reducing regulator, a reinforced supply hose, a Demand Valve and a Universal oro-nasal mask.

The Equinox® II Demand Valve delivers high flow rates with low triggering pressures, reducing the amount of effort required by the patient, to maintain the demanded flow. It provides a maximum flowrate in excess of 200 L/min.

The light weight, colour coded (blue) Demand Valve incorporates a 360° Patient Valve Swivel Housing and is easily disassembled for cleaning. A Bleed Pin is included with the Demand Valve to effectively bleed the system of residual gas after use.

ORDERING INFORMATION

01EQ7000E - Equinox® II Analgesic Gas Administration System complete with Regulator, Bleed Pin, 7 Foot Supply (2 M) Hose, Demand Valve and Universal Face Mask
Each



Equinox® Relieve Analgesic Gas Mixing and Delivery System

The O-Two Equinox® Relieve is intended to provide a 50/50% mixture of nitrous oxide and oxygen (N₂O/O₂), on demand, to a conscious, spontaneously breathing patient for the relief of pain due to trauma or other conditions where inhalation analgesia is clinically specified.

Designed for use in the pre-hospital (ambulance) and in-hospital use (ER, Labour and Delivery etc.), the system has no operator or patient adjustable controls, eliminating the risk of delivering a hypoxic mixture.

It only requires the attachment of pressure regulated medical gas oxygen and nitrous oxide sources and a patient circuit with face mask to be ready for use.

ORDERING INFORMATION

01EQ1000 - O-Two Equinox® Relieve N₂O/O₂ Analgesic Gas Mixing and Delivery System /w O₂ and N₂O gas supply hoses and single patient use circuit with facemask.
Each



Equinox® Advantage Analgesic Gas Mixing and Delivery System

The O-Two Equinox® Advantage Oxygen/Nitrous Oxide Mixing and Delivery System allows you to control the mix of gas and oxygen a patient is receiving in order to provide the appropriate dose for the patient and the procedure. Designed for use everywhere from the pre-hospital (ambulance), In-hospital (ER, Labour and Delivery etc.) and Dental (Surgical Procedures), the portable Equinox® Advantage system is easy to use, and eliminates the risk of delivering a hypoxic mixture.

The O-Two Equinox® Advantage Analgesic Gas Mixing and Delivery System consists of a dual gas (Oxygen and Nitrous Oxide) control module mixing system that maintains the output gas mixture at a constant ratio, over 8 settings, from 25% to 100% oxygen. Each of the two inputs have gas specific built-in alarm systems that generate both visual and audible alarms should either the nitrous oxide or oxygen input fall below 40 PSI. An Oxygen Enrichment Button is provided to allow the operator to deliver a 30 L/min flow of 100% oxygen through the circuit if required.

The O-Two Equinox® Advantage Analgesic Gas Mixing and Delivery System also has a built-in oxygen fail-safe that will provide 100% oxygen should the nitrous oxide input fall below 35 PSI. The system has one Rotary Control Knob for turning the unit to the ON or OFF position and one Rotary Control Knob for the selection of the Oxygen/Nitrous Oxide mixture.

ORDERING INFORMATION

01EQ2000 - O-Two Equinox® Advantage N₂O/O₂ Adjustable Analgesic Gas Mixing and Delivery System c/w O₂ and N₂O gas supply hoses and single patient use circuit with facemask
Each

DEMAND VALVES

The O-Two Demand Valve Devices provide oxygen delivery for the spontaneously breathing patient at high flowrates and low triggering pressures to minimally impact the patient’s work-of-breathing while supplying 100% oxygen on demand.

The Demand Valve Resuscitator has the added advantage of manual triggering for the provision of controlled ventilations to the non-breathing patient and a pressure relief system to prevent barotrauma.

Rugged, lightweight and simple to use, they only require attachment to a regulated medical oxygen supply for immediate use.

Oxygen Demand Valve

The Oxygen Demand Valve is designed for the delivery of oxygen on demand to patients in respiratory distress. It can be used to provide oxygen therapy and is usable by rescuers where positive pressure ventilation is prohibited.

With a 200 L/min flowrate the device accomodates spontaneous breathing with minimal effort on the part of the patient.



ORDERING INFORMATION

01DV3000 - O-Two Demand Valve with 6 Foot (1.8 M) Supply Hose & Universal Face Mask Each

Demand Valve Resuscitator

The Demand Valve Resuscitator provides a fast, simple, and effective means to ventilate non-breathing patients and provides 100% oxygen to patients suffering from respiratory distress “On Demand”.

The Manual Ventilation Flow rate is fixed at 40 L/min in line with the American Heart Association “Recommendations and Guidelines for Resuscitation”. A 60 cm H₂O pressure relief is provided to reduce the risk of barotrauma.

During spontaneous respirations, the Oxygen Demand Valve Resuscitator is designed to provide 100% oxygen to a breathing patient with minimal respiratory effort. The device can provide demand flow rates up to 200 L/min to accommodate the spontaneously breathing patient.



ORDERING INFORMATION

01DV2000 - O-Two Demand Valve Resuscitator with 6 Foot (1.8 M) Supply Hose & Universal Face Mask Each

01DV2005 - O-Two Medical Technologies Demand Valve Resuscitator Kit complete with Adjustable 0 - 25 L/min Regulator in Moulded Case (Cylinder Not Included) Each

01DV2011 - O-Two Medical Technologies Demand Valve Resuscitator Kit complete with Adjustable 0 - 25 L/min Regulator and Statvac® II Aspirator in Moulded Case (Cylinder Not Included) Each

01DV2015 - O-Two Medical Technologies Demand Valve Resuscitator Kit complete with Adjustable 0-25 L/min Regulator with 2 Self-Sealing DISS Outlets in Softpack Clamshell Carrying Case (Cylinder Not Included) Each

01DV2025 - O-Two Medical Technologies Demand Valve Resuscitator Kit complete with Adjustable 0-25 L/min Regulator with 2 Self-Sealing DISS Outlets, Statvac® II Aspirator in Softpack Clamshell Carrying Case (Cylinder Not Included) Each

FLOW AND PRESSURE REGULATORS



Today's high performance ventilators and resuscitators need high performance regulators to optimize their output capabilities. The O-Two series of Oxygen Regulators are the perfect choice to meet the needs of the respiratory impaired patient.

By providing constant pressure and flow, the series of regulators ensures the maximum operating time on any cylinder. The All Brass Construction Regulators improve product safety by reducing the risk of exacerbating a regulator fire should it occur. With their offset gauge and small diameter bodies, the regulators are slim and lightweight. All aluminum shell regulators have solid brass core for safety.

Utilizing fixed orifice technology, our therapy Flow Controllers (both installed in our regulators and stand alone) provide high levels of therapy flow accuracy. With two standard flow ranges they provide a flexible solution for your therapy flow needs.* They also offer either a 9/16 DISS outlet or a built in therapy flow barb.

The Multi-Patient Unit provides oxygen therapy for up to six patients simultaneously during mass casualty scenarios.

Our StatVac® II oxygen powered aspirator provides simple suctioning for emergency airway care. Its fingertip control on/off shuttle valve makes for a positive selection of vacuum flow.

The O-Two Medical series of flow and pressure regulators and flow controllers provide unbeatable quality and performance.

*Other therapy flow ranges are available (minimum order quantities apply).



ADJUSTABLE THERAPY FLOW REGULATORS

Our Adjustable Therapy Flow Regulators provide 12 settings of flow on a click stop control with ranges of 0 - 15 and 0 - 25 L/min. Available in all brass or aluminum body/brass core configurations.

ORDERING INFORMATION

01RO01003-A - Therapy Flow 0 - 25 L/min, Barbed Outlet - Aluminum Shell with Brass Core Pin-Indexed Yoke *Each*

01RO01002-A - Therapy Flow 0 - 15 L/min, Barbed Outlet - Aluminum Shell with Brass Core Pin-Indexed Yoke *Each*

01RO01003-B - Therapy Flow 0 - 25 L/min, Barbed Outlet - All Brass Pin-Indexed Yoke *Each*

01RO02003-B - Therapy Flow 0 - 25 L/min, Barbed Outlet - All Brass 540 Nut & Stem *Each*



COMBINED PRESSURE REDUCER AND THERAPY FLOW REGULATORS

By combining pressure outlets and therapy flow capability into one compact device, these regulators offer the greatest flexibility in patient care when using a Ventilator, Oxygen Powered Demand Valve Resuscitators or other devices

ORDERING INFORMATION

01RO01023-B - Brass Pin-Indexed Yoke with Therapy Flow 0 - 25 L/min, Barbed Outlet - with 2 x 9/16 Self-Sealing DISS Outlets *Each*

01RO01023-MRI - MRI Brass Pin-Indexed Yoke with Therapy Flow 0 - 25 L/min, Barbed Outlet, 2 x 9/16 Self-Sealing DISS Outlets *Each*

01RO02023-B - TBrass 540 Nut & Stem with Therapy Flow 0 - 25 L/min, Barbed Outlet - with 2 x 9/16 Self-Sealing DISS Outlets *Each*



PRESSURE REDUCER REGULATORS

These regulators provide simple pressure reduction with a DISS outlet for the attachment of ventilators and other devices.

ORDERING INFORMATION

01RO02010-B - Brass 540 Nut & Stem with 1 x 9/16" Self Sealing DISS Outlets *Each*

01RO02020-B - Brass 540 Nut & Stem with 2 x 9/16" Self Sealing DISS Outlets *Each*



THERAPY FLOW CONTROLLERS

Our compact and lightweight Therapy Flow Controllers come standard with either 0-15 or 0-25 L/min flowrates and optional 9/16 DISS (for use with humidifier) or barbed outlets.

ORDERING INFORMATION

01FC0115D - Adjustable 0 - 15 L/Min Click Stop Flow Contoller *Each*

01FC0125D - Adjustable 0 - 25 L/Min Click Stop Flow Contoller *Each*

15PL8006 Rev. 2 03/2019 International Catalogue

Mass Casualty Multipatient Unit

The O-Two Medical Technologies Multi-Patient Unit attaches to any oxygen regulator with a 9/16” DISS outlet and supplies a 50 psi pressure with a minimum output flow rate of at least 160 L/Min. It comes with six individual 0 - 15 L/Min adjustable flow controllers and can also operate an automatic resuscitator or demand valve resuscitator from the Self-Sealing DISS outlet on the end of the unit. The flexibility offered by this compact unit is second to none.

The Multi-Patient unit comes in its own Softpack carrying case labeled for easy identification with 6 Medium Concentration Oxygen Masks with Tubing plus a 25 Foot Supply Hose.

ORDERING INFORMATION

01OR6304 - Multi-Patient Unit (Services up to 7 Patients) complete with 25 Foot Supply Hose, 6 Adjustable 0-15 L/min Flow Controls, 2 Self-Sealing DISS Outlets, 6 Medium Concentration Oxygen Masks with Tubing Each

Statvac® II

The Statvac® II Aspirator is capable of effectively suctioning out excessive quantities of fluid/ particles from a patient’s oro/nasal pharynx. The lightweight aspirator attaches to any 50 psi DISS outlet (other connections available upon request).

The unique ON/OFF shuttle provides for fast actuation of the aspirator in an emergency. Continuous suction is provided by simply depressing the “GREEN” shuttle control button. The aspiration can be quickly and easily turned off by depressing the “RED” shuttle control button on the opposite side of the aspirator.

ORDERING INFORMATION

01AS9500 - Statvac® II Aspirator complete with 6 Foot Supply Hose, 8 Ounce Collection Jar, Yankauer Suction Tip & Tubing Each



PATIENT CIRCUITS

The O-Two range of patient circuits for our eSeries and CAREvent® ventilators and Equinox® II Analgesics Gas Delivery Systems offer high performance at a very competitive .

These high-quality, high-performance single patient use and reusable ventilator and analgesic gas delivery circuits are an essential adjunct to providing excellent ventilation and ease of patient management.



ORDERING INFORMATION

01CV8010-Cs - Single Patient-Use Transport Ventilation Circuit with PEEP Port (Case/10)

01CV8015-Cs - Deluxe Single Patient-Use Transport Ventilation Circuit with PEEP Port (Case/10)

01CV8016-Cs - MRI Single Patient-Use Ventilation Circuit with PEEP Port and 10-foot Hose (Case/10)

01CV8025 - CARE®vent Reusable Ventilation Circuit with PEEP Port for ATV+ and MRI Each

01CV8030-Cs - eSeries Single-Use Electronic Transport Ventilator 6 foot Circuit with Protective Sleeve (Case/10)

01CV8028-Cs - Equinox® Advantage Analgesic Gas Delivery System Circuits with expiratory limb and mouth piece (Case/10)

CARRYING AND MOUNTING SYSTEMS

To compliment our range of ventilators, resuscitators and oxygen therapy systems we provide a number of carrying and mounting alternatives for each device.

Whether you need a mounting bracket for your eSeries Ventilator or a carrying case for your Demand Valve Resuscitator we have options available to meet your needs.

Carrying Cases



ORDERING INFORMATION

- 01CV7039** - eSeries Ventilator Soft Pack Carry Case Each
- 01CC8005** - Emergency Responder Moulded Plastic Carrying Case in International Orange for “D” or “Jumbo D” Cylinders Each
- 01CC8016** - Softpack Clamshell Carrying Case with Sling Style Shoulder Strap for “D” or “Jumbo D” Cylinders Each
- 01CC8025** - Semi-Rigid Airway Management Case for “D” or “Jumbo D” Cylinders Each
- 01CC8030** - CAREvent® ATV+/MRI Carrying Case with Shoulder Strap & Stretcher Attachment System Each

Mounting Brackets



ORDERING INFORMATION

- 01CV7035** - “e” Ventilator “Smart Mount” Multi-configuration Mounting Bracket (Ambulance Cot, Hospital Stretcher, Bed, Roll Stand) Each
- 01CV7030** - CAREvent® ATV+ / MRI Ambulance Mounting Bracket Each

ANESTHESIA RESUSCITATION MASKS

Our range of Anesthesia/Resuscitation Masks are available in three styles and a choice of re-usable thermoplastic, autoclavable silicone and single use materials.

Our Universal Mask (thermoplastic or silicone) provides a “one mask fits all” style that is suitable for infants to adults along with traditional “donut” style masks for infants and neonates. A range of traditional cuffed, single-use masks with hook ring are also available.

SINGLE-USE INFLATED CUFF MASK WITH HOOK RING



ORDERING INFORMATION

- 02FM5200-HK-Cs** - Disposable Cuffed Infant #0 Mask with Hook Ring (Case/12)
- 02FM5201-HK-Cs** - Disposable Cuffed Infant #1 Mask with Hook Ring (Case/12)
- 02FM5202-HK-Cs** - Disposable Cuffed Toddler #2 Mask with Hook Ring (Case/12)
- 02FM5207-HK-Cs** - Disposable Cuffed Child/Small Adult #3 Mask with Hook Ring (Case/12)
- 02FM5208-HK-Cs** - Disposable Cuffed Large Adult #5 Mask with Hook Ring (Case/12)
- 02FM5210-HK-Cs** - Disposable Cuffed Adult #4 Mask with Hook Ring (Case/12)

RE-USABLE THERMOPLASTIC MASKS



ORDERING INFORMATION

- 02FM4999-Cs** - Universal Mask (Case/12)
- 02FM5000-Cs** - Medium Mask (#2) with Anatomical Chin Cup (Case/12)
- 02FM5001-Cs** - Large Mask (#3) with Anatomical Chin Cup (Case/12)

RE-USABLE SILICONE MASKS



ORDERING INFORMATION

- 02FM5097-Cs** - Silicone Universal Mask (Case/12)
- 02FM5098-Cs** - Silicone Medium Mask (#2) with Anatomical Chin Cup (Case/12)
- 02FM5099-Cs** - Silicone Large Mask (#3) with Anatomical Chin Cup (Case/12)
- 02FM5100-Cs** - Silicone Toddler/Child Mask (Case/12)

PULSE OXIMETRY



The small, compact, simple, reliable and durable Fingertip Pulse Oximeter greatly enhances patient care. With its 6 display modes and 10 brightness levels this device is easy to read in any orientation and in any light condition.

The graphic displays of SpO₂, waveform and heart rate bar graph plus the numeric displays of SpO₂ provide the user with the information required to assess the patient's condition. The low-voltage operation provides for a nominal 30 hour operating time on one set of batteries.

ORDERING INFORMATION

01MN1000-Cs - Finger Tip Pulse Oximeter c/w Belt Loop Carrying Case Quick Release Lanyard and 2 Batteries (Case/15)

OUR STANDARD IS EXCELLENCE



o_two controlled[™] ventilation

www.otwo.com

45A Armthorpe Road, Brampton, ON, Canada, L6T 5M4

Telephone: +1 905 792-OTWO (6896) N.A. Toll Free: +1 800 387 3405

Facsimile: +1 905 799 1339 Email: resuscitation@otwo.com  0120