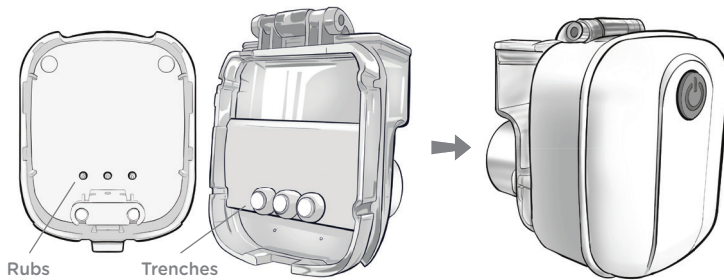




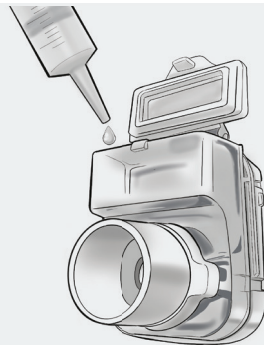
# Mesh NEBULIZER

## QUICK GUIDE



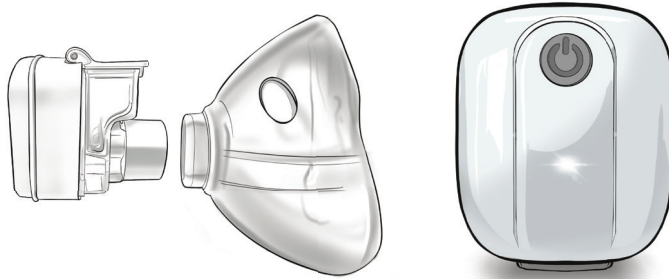
### Initial Setup

- Check device is clean, dry, and charged
- Attach a new medicine cup
- Align the three ribs with the trenches
- Push in firmly into the main unit until it clicks, confirming it is securely seated.



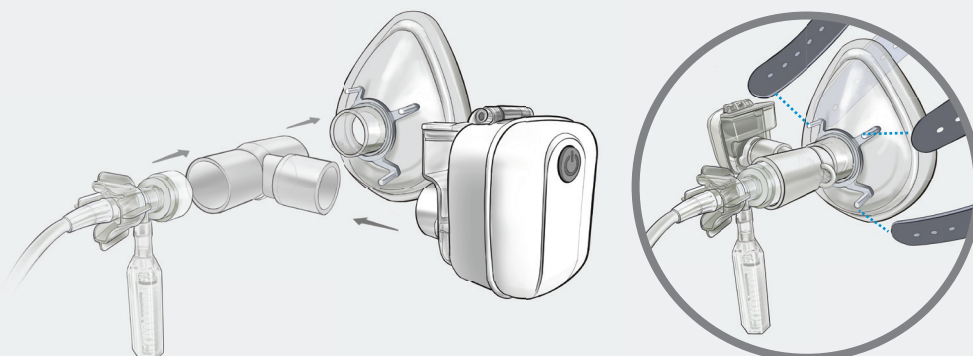
### Add Medication

- Open the cup cap and fill with medication (do not exceed 6 mL)
- Close cap tightly to prevent leaks



### Start Treatment

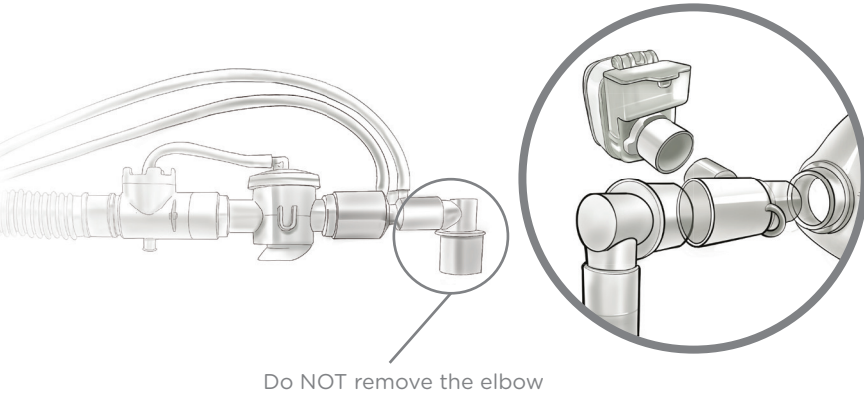
- Attach the mask
- Press ON/OFF button (green light = running)
- Confirm visible mist
- Place on patient (tight seal)
- Instruct patient to breathe normally
- Treatment is complete when mist stops
- Press ON/OFF to turn it OFF



### Using with Disposable CPAP

- Insert a T-piece adapter between the CPAP outlet and the mask
- Connect the nebulizer to the T-piece side port
- Start CPAP flow FIRST
- Apply the mask to the patient and attach the head harness
- Confirm a tight seal with no leaks
- Press ON/OFF to start nebulization

## Using with a Mechanical Ventilator Circuit



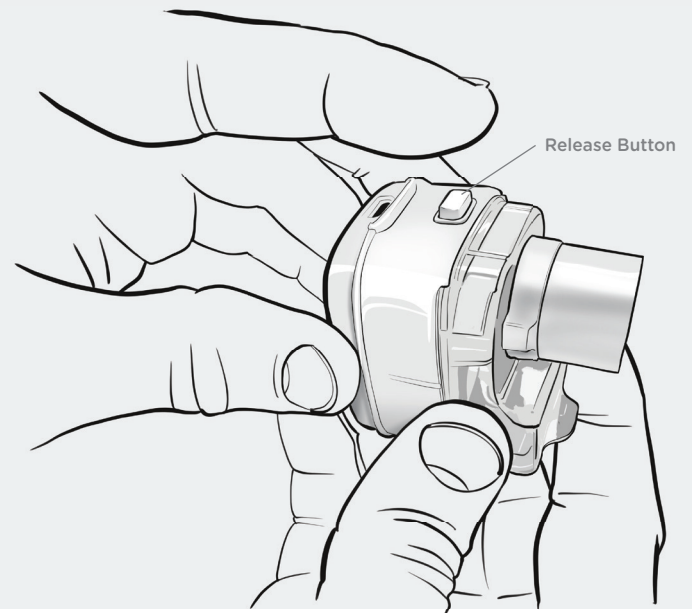
- Insert T-piece between circuit elbow and patient interface
  - For NIV (CPAP/BPAP): place it between elbow and mask
  - For invasive ventilation: between elbow and airway (e.g., endotracheal tube)
- Connect nebulizer to the side port of the T-piece
- Check all connections are secure and free of leaks
- After initiating the ventilation, press ON/OFF to start nebulization

## After Treatment

- Turn device OFF
- Empty any remaining medication
- Run device with distilled water for 1-2 min
- Remove medicine cup by pressing the release button and dispose according to infection-control protocols.
- Wipe the exterior of main unit with an approved disinfectant wipe.

### NOTE

The medicine cup is a single-use, patient-contact component. It must be discarded and replaced after each patient. Do not reuse between patients, as contamination can occur from exhaled breath, coughing, and mask leakage.



## Indicator Lights



**Green**  
Device running



**Blue**  
Charging in progress



**Red flashing**  
Low battery or mesh problem  
(replace cup or recharge device)

## Field Tips

- Monitor patient response and airway
- Tilt slightly if medication volume becomes very low
- Check mask or circuit connections regularly to prevent leaks
- Carry spare medicine cups

[www.otwo.com](http://www.otwo.com)

45A Armthorpe Road, Brampton, ON, Canada, L6T 5M4  
Telephone: +1 905 792-OTWO (6896) N.A. Toll Free: +1 800 387 3405  
Facsimile: +1 905 799 1339 Email: [resuscitation@otwo.com](mailto:resuscitation@otwo.com)

**o\_two** controlled<sup>™</sup>  
ventilation